

Base price: £12950.00	Order no.:

<input type="checkbox"/> Provide estimate only	<input type="checkbox"/> Order
--	--------------------------------

Attachment for custom fabrication enclosed

Billing address / customer number

Delivery address

Sales person	Name

Date	Signature

C2000 (E 101)

Maximum load capacity: 160 kg (std. equipment)

[] Front wheel drive ET07 490E62=00000

[] Rear wheel drive ET08 490E62=30000

C2000-S (E 102)

Maximum load capacity: 160 kg (std. equipment)

[] Front wheel drive ET07 490E62=10000

[] Rear wheel drive ET08 490E62=40000

C2000-H (E 103)

Maximum load capacity: 130 kg (std. equipment)

[] Front wheel drive ET07 490E62=20000

[] Rear wheel drive ET08 490E32=50000



Sample package

Standard Equipment

- 6 km/h
- 94 Ah gel batteries (C5)
- enAble50 impulse controller
- Battery charger
- 14" Caster wheels
- Lighting
- Suspension on all wheels
- Standard seat
- Seat cushion
- Arm rests
- Individual centre foot rests
- Splash guard on all wheels
- Luggage rack
- For C2000-H: incl. electric seat height adjustment, max. load capacity of 130 kg
- For C2000-S: including lap belt

Basic information (optional information)*

Gender _____ Indications _____

Age _____ Paying party _____

Required information

Body height in cm _____

Body weight in kg _____

* The information is intended to help support user oriented adjustment and development of the products. Otto Bock guarantees the confidential and purely internal use of this data.

The number codes contained in this order form are not intended to be used as article numbers for spare parts orders. Please use the spare parts catalogue for spare parts orders.

Frame options		
EA 13	<input type="checkbox"/>	Frame up to 160 kg (standard equipment) Inclusive
EA 16	<input type="checkbox"/>	Frame up to 200 kg £1070.00
EA 18	<input type="checkbox"/>	Frame up to 260 kg (only available with front wheel drive and 6 km/h drive system) POA

Frame accessories		
ES 03	<input type="checkbox"/>	Back warning panel (required for motor vehicle certification) £90.00

Seat height adjustment		
EC 55	<input type="checkbox"/>	Electric seat height adjustment (up to 40 cm, seat inclination 0°) max. load capacity 130 kg! (standard equipment on C2000-H) £995.00
EC 60	<input type="checkbox"/>	"Heavy Duty" electric seat height adjustment (up to 30 cm, seat inclination 0°) max. load capacity 200 kg! £1995.00

Back adjustment options		
ED 50	<input type="checkbox"/>	Electric back angle adjustment (not available on Recaro n-Joy and Recaro n-Joy-Plus) (not available in combination with small Contour seat SD 36 and 38 cm or large Contour seat SD 40 and 42 cm) £432.00

Standard seat (load capacity up to 200 kg)		
EC 01	<input type="checkbox"/>	Standard seat – small (SD 38 ... 46 cm, SW 38 ... 42 cm) Inclusive
EC 02	<input type="checkbox"/>	Standard seat – large (SD 42 ... 50 cm, SW 43 ... 48 cm) Inclusive

Seat options for load capacities between 200 kg and 260 kg available through custom fabrication upon request.

Standard seat settings		
Back angle	<input type="checkbox"/>	-9/1/11/21° <input type="checkbox"/> 0/10/20/30°
Not available with electric back angle adjustment!		
Seat inclination SI	<input type="checkbox"/>	0° <input type="checkbox"/> 3° <input type="checkbox"/> 6°
Seat inclinations of 3° and 6° are not available with electric seat tilt and seat height adjustment!		
Seat depth SD in cm	<input type="checkbox"/>	38 <input type="checkbox"/> 40 <input type="checkbox"/> 42 <input type="checkbox"/> 44 <input type="checkbox"/> 46 <input type="checkbox"/> 48 <input type="checkbox"/> 50
Seat width SW cm	
Lower leg length LL cm (25 ... 54 cm) without seat cushion	

Note: for SI = 3°, without seat cushion, dependent on LL, not available with electric seat height adjustment;
SH minus LL gives ground clearance, minimum of 8 cm is recommended, required ground clearance for centre foot rest => 8 cm

Contour seat (max. load capacity of 200 kg)		
EC 03	<input type="checkbox"/>	Contour seat – small (SD 36 ... 44 cm, SW 38 ... 42 cm) £468.00
EC 04	<input type="checkbox"/>	Contour seat – large (SD 40 ... 48 cm, SW 43 ... 48 cm) £468.00

Contour seat settings		
Seat depth SD in cm	<input type="checkbox"/>	36 <input type="checkbox"/> 38 <input type="checkbox"/> 40 <input type="checkbox"/> 42 <input type="checkbox"/> 44 <input type="checkbox"/> 46 <input type="checkbox"/> 48
Seat width SW cm	

(for SI = 0°, with seat cushion, dependent on LL, not available with electric seat height adjustment)
(ground clearance = SH – LL ; 8 cm is recommended, ground clearance => 8 cm required for centre foot rest)

Recaro seat (up to max. load capacity 200 kg)		
EC 40	<input type="checkbox"/>	Recaro n-Joy (manually adjustable back rest) £496.00
EC 41	<input type="checkbox"/>	Recaro n-Joy-Plus (adaptable on site, manually adjustable back rest, seat depth SD 38 ... 56 cm) £1178.00

Modular Recaro seat system (up to max. load capacity of 200 kg)		
EC 42	<input type="checkbox"/>	Back rest LX (manually adjustable) £498.00
EC 43	<input type="checkbox"/>	Back rest LT (adjustable lateral pads, manually adjustable) £556.00
EC 44	<input type="checkbox"/>	Seat surface F (flat padded, seat surface sewn to lateral support) £709.00
EC 45	<input type="checkbox"/>	Seat surface X (defined lateral support with seat extension) £825.00
EC 46	<input type="checkbox"/>	Seat surface W (flat padded with seat extension) £873.00

Settings for Recaro seat / modular Recaro seating system					
Seat depth SD	<input type="checkbox"/>	<input type="checkbox"/>	<input type="checkbox"/>	<input type="checkbox"/>	<input type="checkbox"/>
(only for Recaro-n-Joy-Plus)	<input type="checkbox"/>	<input type="checkbox"/>	<input type="checkbox"/>	<input type="checkbox"/>	<input type="checkbox"/>
Lower leg length LL cm (28...54 cm) (in 1 cm increments)				

Note: for SI = 0°, with seat cushion, dependent on LL, not available with electric seat height adjustment;

SH minus LL gives ground clearance, minimum of 8 cm is recommended, required ground clearance for centre foot rest => 8 cm

All Recaro seats include head rest and back pouch.

Seat cushion (only for standard seat)		
EC 06	<input type="checkbox"/>	Seat cushion, black upholstery (standard equipment) Inclusive
EC 10	<input type="checkbox"/>	Seat cushion with incontinence cover £31.00
EC 07	<input type="checkbox"/>	Without seat cushion Inclusive

Please refer to our foam seat system brochure for information on additional seat cushions

Seat tilt		
EC 50	<input type="checkbox"/>	Electric seat tilt 30° with centre of gravity adjustment (seat inclination 0°) max. load capacity of 200 kg! £463.00

Back version (only for standard seat)		
ED 01	<input type="checkbox"/>	Back upholstery (standard equipment) Inclusive
ED 02	<input type="checkbox"/>	Without back upholstery Inclusive

Belts		
EP 51	<input type="checkbox"/>	Static 4-point belt system (only for Recaro seat / seat system) £235.00 (not available in combination with seat tilt and seat height adjustment)
EP 60	<input type="checkbox"/>	Chest belt with hook-and-loop closure, installed at chest height £154.00 (only for Recaro seat / seat system)
EP 65	<input type="checkbox"/>	Lap belt with buckle £47.00

Lap belt or 4-point belt required for motor vehicle certification!

Seating system accessories		
EC 20	<input type="checkbox"/>	Removable abduction wedge (only for standard seat, not available in combination with electric seat tilt and seat height adjustment) £198.00
EC 30	<input type="checkbox"/>	Fold-away abduction wedge (only for standard seat, not available in combination with electric seat tilt and seat height adjustment) £202.00
EE 30	<input type="checkbox"/>	Adapter for head rest mounting kit (only for standard and contour seat) £27.00

Please refer to our accessories catalogue for information about head rests

Foot rests		
Lower leg length LL in cm cm		
Without seat cushion for standard seat (LL 24 ... 48 cm), with seat cushion for Recaro seat/seat system and Contour seat (LL 34 ... 58 cm)		
EB 02	<input type="checkbox"/>	Individual foot rests, with aluminium foot plates, max. load capacity 140 kg! £55.00 (continuous angle adjustment) only available with front wheel drive and small standard/Contour seat, Recaro seat
EB 03	<input type="checkbox"/>	Foot rest with continuous aluminium foot plate (continuous angle adjustment) only available with front wheel drive and small standard/Contour seat, Recaro seat £42.00
EB 10	<input type="checkbox"/>	Foot rest for frame up to 260 kg (available upon request through custom fabrication) Inclusive
EB 62	<input type="checkbox"/>	Centre foot rest, individual foot plates (each approx. 18 cm), Angle adjustable footplate (standard equipment) max. load capacity 200 kg! Inclusive
EB 61	<input type="checkbox"/>	Centre foot rest, continuous foot plate, angle adjustable foot plate, max. load capacity 200 kg! Inclusive

Foot rest accessories		
EB 70	<input type="checkbox"/>	Anchoring straps for footplates (included with mounting accessories) £20.00

Arm rest		
EE 10	<input type="checkbox"/>	Arm rest with clothing protector (standard equipment, only for standard and contour seats) Inclusive
EE 33	<input type="checkbox"/>	Extended arm rest with cutout for back angle adjustment £27.00 (included with Recaro seat / seat system)

Information



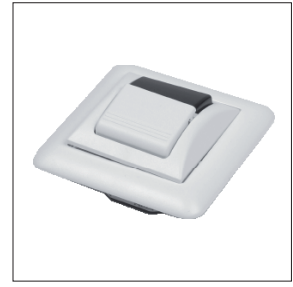
Tray-mounted controls



Calibratable joystick



IR receiver mouse emulation



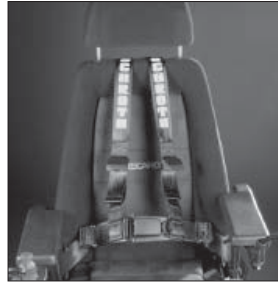
IR switch



Buddy Button



Joystick options



Four-point belt

C2000 – seat height matrix (in cm)						
		Standard seat (without cushion)	Contour seat	Recaro seat		
				Seat surface W	Seat surface F	Seat surface X (n-Joy)
Front wheel drive	Seat frame (*)	47	57	58	57	60
	electric seat tilt	51	61	63	62	65
	Lift and tilt unit	58	68	70	69	72
Rear wheel drive	Seat frame (*)	53	63	66	65	68
	electric seat tilt	53	63	65	64	67
	Lift and tilt unit	58	68	70	69	72

(*) 3° seat inclination not available

Manufacturing tolerance +/- 1 cm

Arm rest accessories			
EE 34	<input type="checkbox"/>	Fixed channel forearm pad, left mounting side	£13.00
EE 24	<input type="checkbox"/>	Fixed channel forearm pad, right mounting side	£13.00
EE 35	<input type="checkbox"/>	Channel forearm pad adapter, swing-away, left mounting side	£90.00
EE 25	<input type="checkbox"/>	Channel forearm pad adapter, swing-away, right mounting side	£90.00
EE 36	<input type="checkbox"/>	Arm safety belt, left mounting side	£22.00
EE 26	<input type="checkbox"/>	Arm safety belt, right mounting side	£22.00

Please refer to our accessories catalogue for information about channel forearm pads and hand rests!

Frame colour			
EO 17	<input type="checkbox"/>	Dormant Sky Blue	
EO 18	<input type="checkbox"/>	Stainless Steel Silver	
EO 15	<input type="checkbox"/>	Dormant Sparkle Red	
EO 06	<input type="checkbox"/>	Sparkle Light Orange	
EO 16	<input type="checkbox"/>	Deep Black (RAL 9005)	
EO 99	<input type="checkbox"/>	Custom frame colour (single-coat varnish from Otto Bock colour program only)	£107.00

Tyre colour			
EG 03	<input type="checkbox"/>	Grey	
EG 04	<input type="checkbox"/>	Black (only with lugs)	

Tread pattern			
EG 02	<input type="checkbox"/>	Lugs	
EG 50	<input type="checkbox"/>	Caster wheels with grooves, drive wheels with lugs (not available with black tyres)	

Tyres			
EG 55	<input type="checkbox"/>	Pneumatic tyres (standard equipment)	Inclusive
EG 60	<input type="checkbox"/>	puncture-proof tyres on all wheels (PU caster wheels, drive wheels with emergency repair kit)	£117.00

Drive system			
ET 01	<input type="checkbox"/>	6 km/h drive system (standard equipment)	Inclusive
ET 02	<input type="checkbox"/>	10 km/h drive system (not available in combination with 260 kg frame), (motor vehicle certification included, lap belt or 4-point belt and rear warning panel required)	£295.00
ET 06	<input type="checkbox"/>	14 km/h drive system (not available in combination with 200 kg and 260 kg frames), (motor vehicle certification included, lap belt or 4-point belt and rear warning panel required)	£591.00

Batteries			
EU 03	<input type="checkbox"/>	Without	Inclusive
EU 01	<input type="checkbox"/>	Two 94 Ah gel batteries (C5)	Inclusive

Charger			
EU 91	<input type="checkbox"/>	Battery charger (standard equipment)	Inclusive

Control unit / control panel			
EU 85	<input type="checkbox"/>	Standard control panel (standard equipment)	Inclusive
EU 86	<input type="checkbox"/>	Control panel with two external buttons Please specify: <input type="checkbox"/> Buddy Button (diameter 60 mm, red/black) <input type="checkbox"/> Piko Button (diameter 30 mm, red/black)	£170.00

Special controls			
EU 07	<input type="checkbox"/>	Button module (control of max. 5 electrical options without LCD)	£760.00
EU 98	<input type="checkbox"/>	Programmable LCD, including IR environment control functions and running light controls	£2180.00
EU 97	<input type="checkbox"/>	Programmable LCD, IR environment control functions, including Bluetooth and running light controls	£2399.00

Adapter for 1 ... 6 buttons – 1 button and ON/OFF button – required for running light control!

The following special controls require an LCD:			
EU 09	<input type="checkbox"/>	Chin control with electric fold-away mini-joystick (incl. standard control panel) Please specify: <input type="checkbox"/> Soft ball with elastomer <input type="checkbox"/> Soft ball with stiff spring <input type="checkbox"/> Soft ball with soft spring Please specify mounting version: <input type="checkbox"/> Chin pivot arm, left <input type="checkbox"/> Chin pivot arm, right <input type="checkbox"/> Chin pivot arm above head, installed on the left (multi-function switch MFS on the right) <input type="checkbox"/> Chin pivot arm above head, installed on the right (multi-function switch MFS on the left)	£2360.00
	<input type="checkbox"/>	Chin control with electric fold-away midi joystick (incl. standard control panel) Please specify mounting version: <input type="checkbox"/> Chin pivot arm, left <input type="checkbox"/> Chin pivot arm, right <input type="checkbox"/> Chin pivot arm above head, installed on the left (multi-function switch MFS on the right) <input type="checkbox"/> Chin pivot arm above head, installed on the right (multi-function switch MFS on the left)	£2360.00
EU 10	<input type="checkbox"/>	Foot control (standard control panel included) <input type="checkbox"/> right <input type="checkbox"/> left	£1615.00
EU 11	<input type="checkbox"/>	Sip/puff control (only available in combination with 6 km/h drive system and Recaro seat/ seat system, standard control panel included)	£1114.00
EU 12	<input type="checkbox"/>	Tray-mounted controls	£955.00
EU 40	<input type="checkbox"/>	Calibratable joystick, standard incl. multi-function switch (including standard control panel) Please specify: <input type="checkbox"/> Control button with elastomer <input type="checkbox"/> Soft ball with elastomer <input type="checkbox"/> Soft ball with stiff spring <input type="checkbox"/> Soft ball with soft spring	£1615.00
EU 45	<input type="checkbox"/>	Calibratable joystick incl. multi-function switch for installation in tray (including LCD holder with gooseneck for mounting on tray and standard control panel) Please specify: <input type="checkbox"/> Control button with elastomer <input type="checkbox"/> Soft ball with elastomer <input type="checkbox"/> Soft ball with stiff spring <input type="checkbox"/> Soft ball with soft spring	£1884.00
EU 61	<input type="checkbox"/>	IR remote control hands-free phone including power plug	£1897.00
EU 62	<input type="checkbox"/>	IR receiver mouse emulation	£446.00
EU 63	<input type="checkbox"/>	Input assist Mouseclick "Dragger 32" (IR receiver mouse emulation in combination with special controls included)	£352.00
EU 59	<input type="checkbox"/>	Adapter cable for left/right Mouseclick Please specify: <input type="checkbox"/> Buddy-Button (diameter 60 mm, red/black) <input type="checkbox"/> Piko-Button (diameter 30 mm, red/black)	£138.00

Accessories for special controls			
EU 67	<input type="checkbox"/>	ON/OFF or EMERGENCY STOP with gooseneck for LCD	£232.00
EU 75	<input type="checkbox"/>	ON/OFF button for LCD module including adapter cable (ON/OFF or EMERGENCY STOP with gooseneck or ON/OFF button for running light controls and 5-x Piko button required)	£160.00
EU 68	<input type="checkbox"/>	Adapter for 1 ... 6 button Buddy-Button for LCD (required for running light control and Buddy-Button/Piko-Button) Buddy-Button (diameter 60 mm)	£79.00
Buddy-Button (diameter 60 mm)			
EU 69 1	<input type="checkbox"/>	Red	£85.00
EU 69 2	<input type="checkbox"/>	Yellow	£85.00
EU 69 3	<input type="checkbox"/>	Black	£85.00
EU 69 4	<input type="checkbox"/>	White	£85.00
EU 69 5	<input type="checkbox"/>	Blue	£85.00
EU 69 6	<input type="checkbox"/>	Green	£85.00

Piko-Button (diameter 30 mm)			
EU 70 1	<input type="checkbox"/>	Red	£85.00
EU 70 2	<input type="checkbox"/>	Yellow	£85.00
EU 70 3	<input type="checkbox"/>	Black	£85.00
EU 70 4	<input type="checkbox"/>	Silver	£85.00
Control panel holder			
EU 19	<input type="checkbox"/>	Control panel holder, standard (standard equipment)	Inclusive
EU 20	<input type="checkbox"/>	Control panel holder, parallel swing-away	£146.00
EU 29	<input type="checkbox"/>	Control panel holder, downwards adjustable	£43.00
Control panel mounting side (not for tray-mounted controls)			
	<input type="checkbox"/>	Right	
	<input type="checkbox"/>	Left	
Drive-away lock activation			
	<input type="checkbox"/>	Yes	
	<input type="checkbox"/>	No	
Electronic steering lock activation			
	<input type="checkbox"/>	Yes	
	<input type="checkbox"/>	No	
LCD holder			
EU 31	<input type="checkbox"/>	Holder for standard LCD (standard equipment for LCD)	Inclusive
EU 30	<input type="checkbox"/>	LCD holder, swing-away, height and angle adjustable	£164.00
EU 32	<input type="checkbox"/>	LCD holder with gooseneck	£216.00
EU 34	<input type="checkbox"/>	LCD holder with gooseneck for tray (included)	£188.00
Control unit accessories			
EU 15	<input type="checkbox"/>	Attendant control	£295.00
EU 22	<input type="checkbox"/>	Guard for standard control panel	£36.00
EU 23	<input type="checkbox"/>	Tetra fork, horizontal (adjustable for hand widths 70 ... 90 mm)	£97.00
EU 24	<input type="checkbox"/>	Stick S80 (special joystick handle 80 mm)	£48.00
EU 25	<input type="checkbox"/>	Soft Ball (black upholstery)	£50.00
EU 26	<input type="checkbox"/>	Ball attachment, small (diameter 43 mm)	£65.00
EU 50	<input type="checkbox"/>	Handheld programming device (Specialist dealer version, non-rebatable)	£695.00
EU 681	<input type="checkbox"/>	2-way adapter cable with Buddy Button (black) (unrestricted assignment of 2 electrical functions) Please specify function: <input type="checkbox"/> Foot rest – left <input type="checkbox"/> Foot rest – right <input type="checkbox"/> Seat tilt <input type="checkbox"/> Back angle adjustment <input type="checkbox"/> Seat height adjustment <input type="checkbox"/> Light <input type="checkbox"/> Hazard flasher <input type="checkbox"/> Left direction indicator <input type="checkbox"/> Right direction indicator <input type="checkbox"/> Horn	£240.00

EU 682	<input type="checkbox"/>	2-way adapter cable with Piko Button (black) (unrestricted assignment of 2 electrical functions) Please specify function: <input type="checkbox"/> Foot rest – left <input type="checkbox"/> Foot rest – right <input type="checkbox"/> Seat tilt <input type="checkbox"/> Back angle adjustment <input type="checkbox"/> Seat height adjustment <input type="checkbox"/> Light <input type="checkbox"/> Hazard flasher <input type="checkbox"/> Left direction indicator <input type="checkbox"/> Right direction indicator <input type="checkbox"/> Horn	£240.00
---------------	--------------------------	---	---------

General accessories			
ES 20	<input type="checkbox"/>	Removable side pouch (can not be mounted on control panel side in combination with parallel swing-away holder, not available in combination with parallel swing-away holder and tray)	£146.00
ES 22	<input type="checkbox"/>	Accessory pouch (e.g. for charger, toolkit)	£33.00
ES 24	<input type="checkbox"/>	Cell phone pocket	£49.00
ES 32	<input type="checkbox"/>	Cover for standard accessories	£221.00
ES 35	<input type="checkbox"/>	Tray, fold-away to the side (incl. mounting kit, cutout for control panel must be adjusted)	£332.00
EZ 80	<input type="checkbox"/>	Airman pump	£78.00
ES 37	<input type="checkbox"/>	External odometer (only in combination with standard control panel and guard)	£113.00
EA 60	<input type="checkbox"/>	Crutch holder	£44.00
ES 38	<input type="checkbox"/>	Folding rearview mirror, left mounting side	£68.00
ES 28	<input type="checkbox"/>	Folding rearview mirror, right mounting side (cannot be installed on control panel side in combination with parallel fold-away holder and tray)	£68.00
EZ 52	<input type="checkbox"/>	Toolkit	£32.00
EU 22	<input type="checkbox"/>	Guard for standard control panel	£36.00

Headrests and Mountings				
430H2=1-7	[]	Soft Headrest - Large		£82.00
430H2=3-7	[]	Soft Headrest - Small		£77.00
476L52=SK025	[]	Multi-Axis Mounting Kit, Straight - Black		£55.50
476L52=SK015	[]	Multi-Axis Mounting Kit, Offset - Black		£59.00
476L52=SK035	[]	Goose Neck Mounting Kit, Black		£70.50
Backster				
481D00=SK640	[]	Backster Size 1 (38-42cm)		£371.00
481D00=SK644	[]	Backster Size 2 (42-46cm)		£371.00
481D00=SK648	[]	Backster Size 3 (46-50cm)		£371.00
Cushions				
476C00=AC	[]	Advantage Cushion - thickness approx 8cm		£317.00
476C00=FFC	[]	Cloud Cushion - thickness approx 10cm		£396.00
476C00=SK420	[]	Combi 3s - thickness approx 6.5cm		£85.00
476C00=SK300	[]	Contour Gel - thickness approx 10cm at the front and 6cm at the rear		£150.00
476C00=SK410	[]	Evolight Pro - thickness approx 5cm		£141.00
Arm Supports				
436A2=3-7	[]	Channel Forarm Pad - Small	QTY []	£38.00
436A2=2-7	[]	Channel Forarm Pad - Medium	QTY []	£38.00
436A2=1-7	[]	Channel Forarm Pad - Large	QTY []	£38.00
Thoracic Supports				
434P1=1-7	[]	Side Thoracic Support - Large	QTY []	£60.50
434P1=2-7	[]	Side Thoracic Support - Medium	QTY []	£60.50
434P1=3-7	[]	Side Thoracic Support - Large	QTY []	£60.50
434F1=L-7	[]	STS Mounting Kit, Standard, Left, Black	QTY []	£62.00
434F1=R-7	[]	STS Mounting Kit, Standard, Right, Black	QTY []	£62.00
434F2=L-7	[]	STS Mounting Kit, Extended, Left, Black	QTY []	£62.00
434F2=R-7	[]	STS Mounting Kit, Extended, Right, Black	QTY []	£62.00
434H1=1-7	[]	STS Clamp 1" (25mm), Black - Priced Individually	QTY []	£15.50
Footcaps (Pair)				
476B52=SK010	[]	Footcaps Size 1 - (190x89mm) - 75kg capacity		£97.00
476B52=SK015	[]	Footcaps Size 2 - (230x114mm) - 125kg capacity		£97.00
476B52=SK020	[]	Footcaps Size 3 - (250x140mm) - 180kg capacity		£97.00
TOTAL =				