

Base price: £4115.00	Order no.:

<input type="checkbox"/> Provide estimate only		<input type="checkbox"/> Order	
<input type="checkbox"/> Attachment for custom fabrication enclosed			
Billing address / customer number			
Delivery address			
Sales person		Name	
		
		Date	Signature

Skippi

Children's power wheelchair

maximum load capacity: 50 kg
Article number: 490E55=00000



Standard Equipment

- enAble40 with the ability to control two electric options
- 6 km/h
- 31 Ah (C20) gel batteries
- Battery charger
- 8" PU caster wheels
- Standard seat with back pouch
- Seat cushion
- Telescoping side panels
- Telescoping individual foot rests
- Drive wheel fenders
- Drive wheels with black aluminium rim

Basic information (optional information)*

Gender _____ Indications _____

Age _____ Paying party _____

Required information

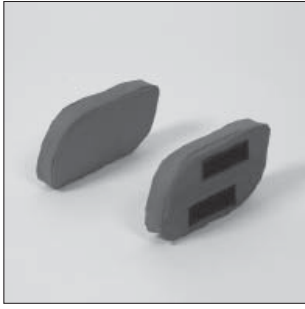
Body height in cm _____

Body weight in kg _____

* The information is intended to help support user oriented adjustment and development of the products. Otto Bock guarantees the confidential and purely internal use of this data.

The number codes contained in this order form are not intended to be used as article numbers for spare parts orders.
 Please use the spare parts catalogue for spare parts orders.

Information



Lateral pads



Electric seat tilt



Handheld programming device



Individual foot rests



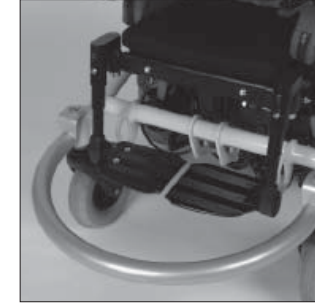
Attendant control



Continuous foot rest



Elevating foot rest



Bumper bar

Standard seat settings (SD 28 ... 38 cm, SW 30 ... 42 cm)	
Back angle	[] -9/1/11/21° [] 0/10/20/30°
Not available with electric back angle adjustment!	
Seat depth SD	[] 28 cm [] 30 cm [] 32 cm [] 34 cm [] 36 cm [] 38 cm
Seat width SW cm (30 ... 38 cm, SW 24 ... 29 cm available with removable lateral pad)
Lower leg length LL cm (15 ... 38 cm) without seat cushion

Seat options		
EC 51	[]	Manual seat tilt (height-adjustable, removable push handles required) £165.00
EC 50	[]	Electric seat tilt £395.00

Back adjustment		
ED 50	[]	Electric back angle adjustment (not available in combination with seating shell adapter) £495.00

Seating System Accessories		
EC 57	[]	Electric seat height adjustment 20 cm £895.00
EE 30	[]	Mounting accessories for head rest mount £27.00 Please refer to our accessories catalogue for information about head rests
EP 65	[]	Lap belt with buckle £47.00
EE 37	[]	Removable lateral pad for side panels (set, 3 cm thick) £65.00 (not available in combination with seating shell adapter for MyGo seat unit)
ED 10	[]	Push handles, height-adjustable, detachable £153.00
ED 11	[]	Back extension (35 cm – 45 cm) £128.00

Seating system options		
EC 15	[]	Trapeze seating shell adapter (on standard seat without back upholstery and seat cushion) £198.00 (Not available in combination with electric back angle adjustment! Further adaptations possible upon request through custom fabrication!)
EC 47	[]	Seating shell adapter for MyGo seat unit £195.00 (without back upholstery, seat cushion, foot rests, and side panels)
EC 48	[]	Seating shell adapter for Squiggles Mygo seat unit £195.00 (without back upholstery, seat cushion, and foot rests)

Further adaptations possible upon request through custom fabrication!

Foot rests		
EB 02	[]	Individual foot rests with aluminium foot plates (standard equipment, LL 23 ... 38 cm) Inclusive
EB 05	[]	Foot rest with continuous aluminium foot plate (LL 23 ... 38 cm) £118.00
EB 06	[]	Foot rest for short LL (LL 15 ... 22 cm) £169.00
EB 16	[]	Foot rest for short LL with continuous aluminium foot plate (LL 15...22 cm) £250.00
EB 20	[]	Manual elevating foot rest (LL 15 ... 33 cm) £430.00

Frame colour		
EC 003	[]	Yellow (blue back upholstery, red fenders) Inclusive
EC 004	[]	Red (blue back upholstery, yellow fenders) Inclusive
EC 005	[]	Marine Blue (red back upholstery, yellow fenders) Inclusive
EC 006	[]	Silver Metallic (black back upholstery, black fenders) Inclusive

Tyres		
EF 10	[]	Puncture proof tyres on the caster wheels (standard equipment) Inclusive
EG 06	[]	Puncture proof tyres – all wheels £92.00

Control unit / control panel		
EU 85	[]	Standard (standard equipment) Inclusive
EU 06	[]	Tray-mounted controls, fold-away to the right £782.00
EU 06	[]	Tray-mounted controls, fold-away to the left £782.00

Control panel holder		
EU 19	[]	Control panel holder, standard (standard equipment) Inclusive
EU 20	[]	Control panel holder, parallel swing-away (not recommended for use with the Mygo seat) £146.00

Control panel mounting side (not for tray-mounted controls)		
	<input type="checkbox"/>	Right
	<input type="checkbox"/>	Left

Drive-away lock activation		
	<input type="checkbox"/>	Yes
	<input type="checkbox"/>	No

Control unit accessories			
EU 15	<input type="checkbox"/>	Attendant control (Height adjustable, removable push handles required)	£420.00
EU 22	<input type="checkbox"/>	Control panel guard	£36.00
EU 23	<input type="checkbox"/>	Tetra forks (standard width 4 – 8 cm)	£97.00
EU 24	<input type="checkbox"/>	Stick S80 (special joystick handle 80 mm)	£48.00
EU 25	<input type="checkbox"/>	Soft Ball (black upholstery)	£50.00
EU 26	<input type="checkbox"/>	Ball attachment, small (diameter 43 mm)	£65.00
EU 50	<input type="checkbox"/>	Handheld programming device (Specialist dealer version, non-rebatable)	£695.00

General accessories			
ES 25	<input type="checkbox"/>	Add-onlights	£114.00
ES 05	<input type="checkbox"/>	Lights in accordance with STVzO (German road traffic act)	£299.00
ES 39	<input type="checkbox"/>	Manual horn	£15.00
ES 35	<input type="checkbox"/>	Tray, fold-away to the side (incl. mounting accessories, cutout for control panel must be adjusted)	£332.00
ES 40	<input type="checkbox"/>	Pennant	£23.00
ES 63	<input type="checkbox"/>	Bumper bar, removable (only up to LL 32 cm)	£166.00
EZ 52	<input type="checkbox"/>	Toolkit with air pump	£32.00
ES 60	<input type="checkbox"/>	Anchor kit for transportation in a motor vehicle	Inclusive